



倍仕得电气科技(杭州)股份有限公司
BEISIT ELECTRIC TECH (HANGZHOU) CO.,LTD.



TPP Fluid Connector

Beisit factory Aeroview



做人, 把人品做好,
做企业, 把产品做好。

董事长:

郑永

Product Collection



Brand Definition



"I" stands for "Integrity"

"I" stands for "International"

"BEST": Best

Functions as an international company of high integrity whose mission is to provide customer with finest products and services

倍仕得

pronounced as "bei", means "more", gathering more talents; mastery of work comes from more diligence; developing with high efficiency.

pronounced as "shi", means "talents", a person with ability and integrity; Both enterprise and individual should have a bright future, indicating the idea of people-oriented.

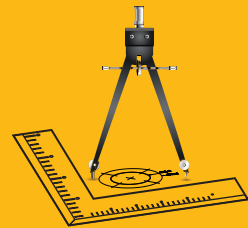
pronounced as "de", means "possess", to create and possess higher value.

Gather a large number of talents, and create a glorious future

Quick Fluid Connector Purification Workshop

BEISIT®

Design and Manufacture of Precision Cutting Tools.



Design and Manufacture of Precise Cutting Tools

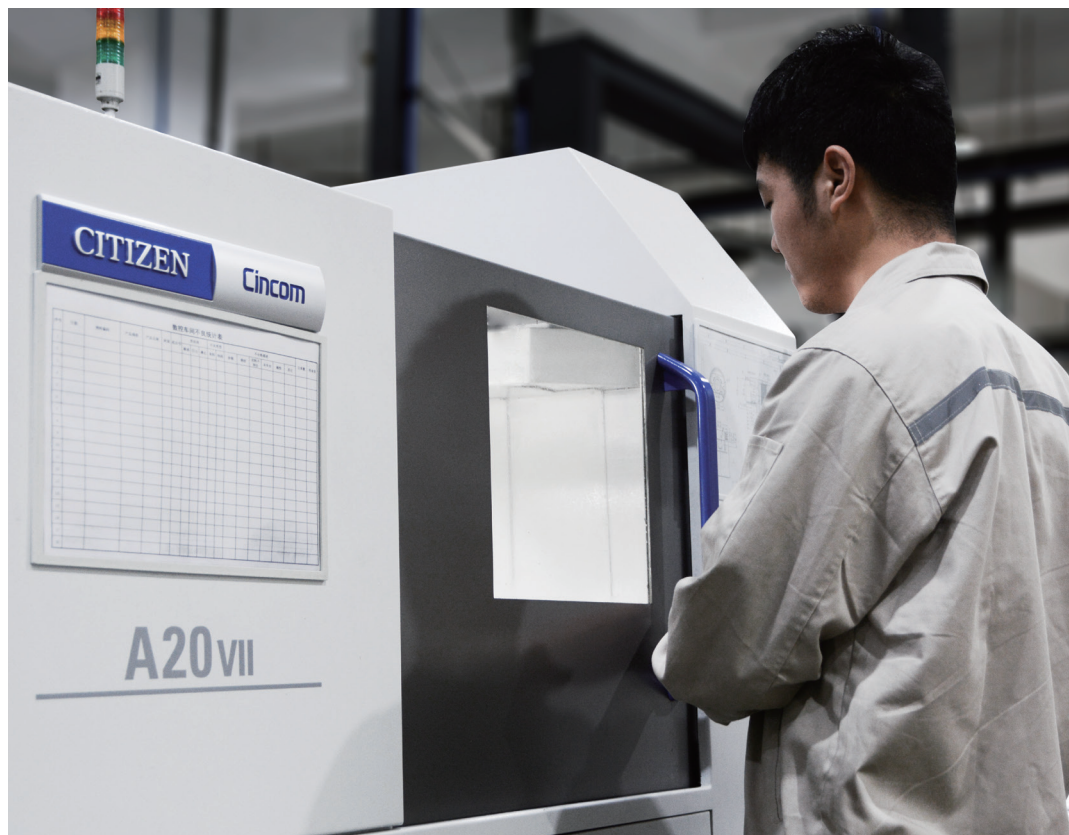


Design and Manufacture of Precision Cutting Tools

The machining accuracy can be accurate to 0.01mm

3days to provide metal samples

7days to deliver samples



Company Certifications



Informatization System



Efficient and fast Informatization system.



Testing Center



The raw materials:metal material testing

The sealing:anti-aging test,hardness testing

The spring:fatigue test,spring force detection



High and Low Temperature Alternating Humid Heat Test Chamber



Flow resistance tester



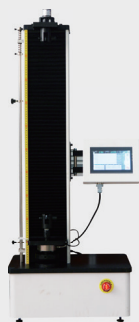
Automatic digital display spring fatigue testing machine



Machined parts: roughness detection, dimensional measurement

Surface treatment: film thickness detection, salt spray test

Product: withstand voltage test, sealing test, flow coefficient test, connection and separation force test, durability test, minimum burst pressure test, high temperature test, low temperature test, interchangeability test



Automatic digital display spring tension pressure testing machine



Neutral Salt Spray Tester

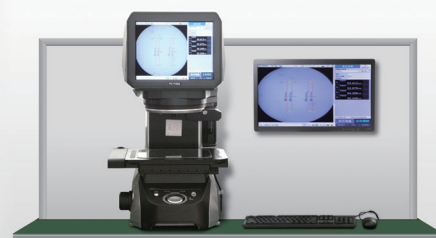
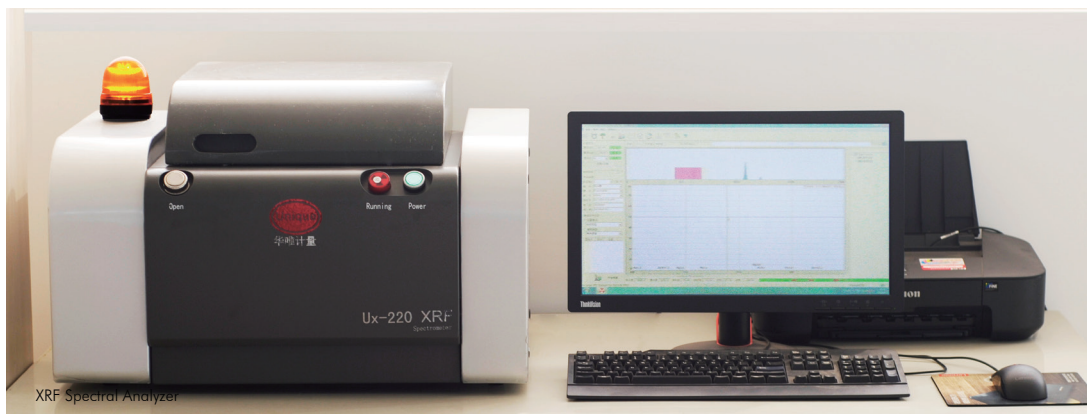


Image dimension measuring instrument



Air tightness tester



XRF Spectral Analyzer

Corporate Culture



Mission: To supply most reliable connectors for global industry.

Customer Value: Revere clients; Never waver in determination to create unique value for our clients.

Quality Value: Quality as life, only once. Never waver in determination to produce 100% qualified products.

A background image of the Earth from space, showing the Americas. Overlaid on the globe are numerous glowing blue dashed lines that represent a global network or data connections, crisscrossing the planet.

Linking with the World
Connecting to the Future

TPP TPP Fluid Connector



Safe & Environmental

- Bi-directional flat sealed design that ensures no leakage during connection and disconnection.
- Flat seal design, which is easy to clean and avoids contamination of the medium.
- Plug and socket are equipped with protective caps to prevent the sealing surface from being polluted during transportation.
- Please contact us if you have requirement for pressure relief after disconnection.

Stable & Reliable

- Steel ball locking and internal long guiding structure is suitable for greater mechanical stress environment.
- Various sealing material O-rings are available to meet the temperature requirements of different media and guarantee long-term stable & and reliable sealing performance.
- The radial design of the O-ring at the connection of the Plug and Socket ensures that the sealing function has been completed before the valve is opened during connection.

Convenient

- Steel ball locking semi-automatic connection, push-in to lock the connection and seal, easy to operate, convenient and quick.
- Multiple color options for quick identification of different circuits.
- G male thread with O-ring makes installation more convenient and sealing easier.
- Long locking rings with convex shoulder and knurls for easier gripping and disconnecting.

Customized

- Providing customized end-fitting for easy installation.
- Providing customized hose integration with aesthetic appearance and reducing risk of leakage.
- For other customization requirements, please contact us freely.

TPP TPP Fluid Connector



Application Fields

- Aerospace, military defense and other fields
- Medical equipment
- Data center, Supercomputer
- Nuclear energy, wind power, photovoltaic(energy storage, converters) and other new energy fields
- Rail transit, New energy vehicles
- Industry

Applicable Fluid Types

- Coolant
- Deionized water
- Glycol Water
- Heat transfer oils
- Esters
- Kerosene
- PAO

Part Numbers

TPP 05S G14F - SS - NB - 90 - RD

Colour	
RD	Red
YW	Yellow
BU	Blue
GN	Green
BK	Black

Angle	
00	Straight through
90	90 Degree Elbow
45	135 Degree Elbow

Seals	
EP	Ethylene Propylene Rubber EPDM
NB	Nitrile Rubber NBR
FM	Fluorocarbon Rubber FPM/FKM/Viton
FV	Fluorosilicone Rubber FVMQ
FF	Highly Fluorine Rubber FFKM
CR	Neoprene CR

Material	
AL	Aluminum
SS	Stainless Steel 316L
BR	Brass With Nickel Plated
SA	Stainless Steel 304

Male and Female Threads	
F	Female Thread
M	Male Thread

G/R/N/J Thread Size	
18 1/8	32 1-1/2"
14 1/4	01 1"
38 3/8	02 2"
12 1/2	04 4"
34 3/4	
M Thread Size	
08	M8 Thread
12	M12 Thread
21	M21 Thread
H08	Connects with 08 inner diameter rubber hose
S10	Connects with 10 outer diameter stainless steel tube
B810	Connects with 8x10 brass tube
T812	Connects with 8x12 plastic tube
F3636	Flange hole 36x36

End Fitting Type	
G	G Thread
R	R Thread
N	NPT Thread
J	UNF thread JIC37 ° taper ISO8434
M	M Thread
H	Hose
S	Stainless Steel Tube
B	Brass Tube
T	Plastic Tube
F	Flange

Coupling Type	
S	Socket
P	Plug

Equivalent Diameter	
03 3mm	09 9mm
05 5mm	10 10mm
06 6mm	12 12mm
08 8mm	16 16mm
20 20mm	
25 25mm	
50 50mm	
00 100mm	

Category Name	
B	Automatic Connecting With Flat Face Seal
S	Without Locking Mechanism
T	Others
BBT	Bayonet Locking Mechanism
BTG	Tri-Curve Groove Locking Mechanism
BSL	Auto Steel Ball Locking Mechanism
SCB	Blind-Mate, Without Lock Mechanism
SDB	Coaxial Correction Function Blind-mate, Without Locking Mechanism
TPP	Semi-auto Steel Ball Locking Mechanism
TSF	Screw Locking Mechanism
TPB	Push-Button Locking Mechanism With Needle Valve

Selection of sealing materials

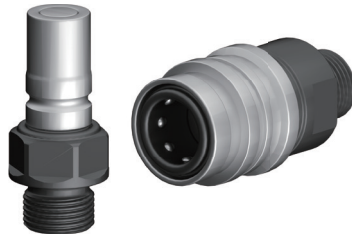
Material	Code	Working temperature	
NBR	NB	-15 ~ + 100 °C	<ol style="list-style-type: none"> 1. General applications. 2. High mechanical strength.
FPM、FKM、Viton	FM	-10 ~ + 200 °C	<ol style="list-style-type: none"> 1. Good chemical resistance. 2. Outstanding resistance to high temperatures up to 200 °C . 3. Resistance to mineral oils, synthetic hydraulic oils, fuels, chemicals,hydrocarbons and coolants.
EPDM	EP	-20 ~ + 150 °C	<ol style="list-style-type: none"> 1. Excellent resistance to high temperatures. 2. Compatible with phosphate-based brakefluids - esters, hot and cold water, steam. 3. Pay attention to the use of mineral oil in the components of the medium circuit
FFKM	FF	0 ~ + 250 °C	<ol style="list-style-type: none"> 1. Combines the qualities of an elastomer with the chemical resistance of PTFE. 2. Remarkable resistance to heat and most chemical agents including inorganic and organic acids. 3. Coolants.
FVMQ	FV	-45 ~ + 175 °C	<ol style="list-style-type: none"> 1. Max. working pressure: 50 bar. 2. Good resistance to low and high temperatures. 3. Resistance to mineral oils, fuels.
PTFE	PT	-50 ~ + 200 °C	<ol style="list-style-type: none"> 1. Max. working pressure: 80 bar. 2. Excellent chemical resistance. 3. Very good resistance to low and high temperatures. 4. Superior performance to elastomers.
CR	CR	-40 ~ + 100 °C	Good resistance to ageing and refrigerant.

In order to choose the solution that best meets your application needs, it is recommended to provide us with the following accurate information:

1. Fluid type 2. Work pressure 3. Working temperature 4. Salt and acid concentration of aqueous solution 5. Special usage conditions

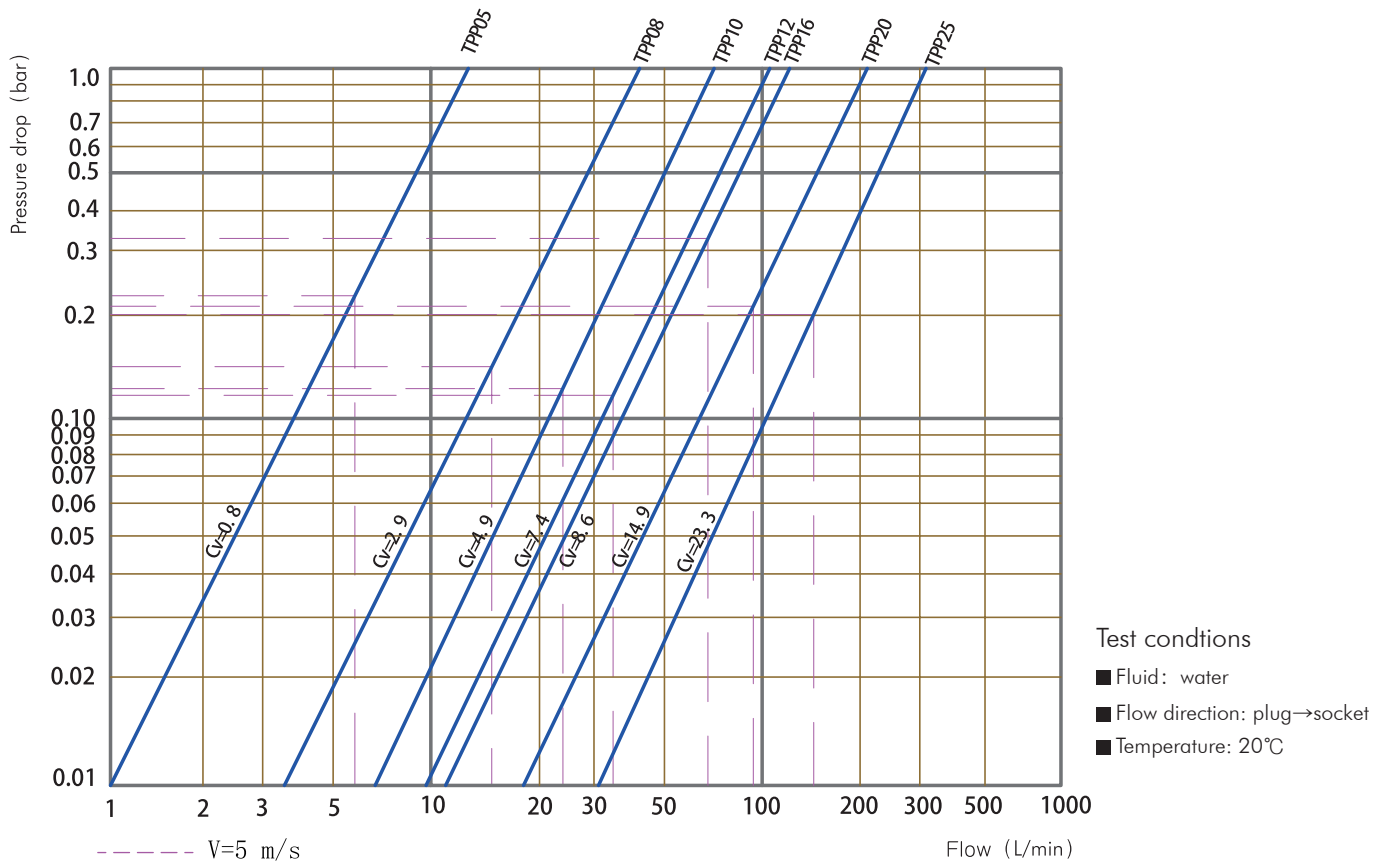
If you need any inquiries, please feel free to contact our technical experts.
Our experienced quick connector experts provide you with the most thoughtful service.

Technical Parameter



Regular Type							
Product Model	TPP05	TPP08	TPP10	TPP12	TPP16	TPP20	TPP25
Nominal Working Pressure (bar)	40	20	20	20	20	20	16
CV (Gal/min)	0.8	2.9	4.9	7.4	8.6	14.9	23.3
Nominal Working Flow Rate (L/Min)	5.88	15.07	23.55	33.90	68.05	94.2	147.18
Leakage Per Disconnection (ml)	0.02	0.02	0.03	0.05	0.10	0.12	0.12

TPP Pressure drop/Flow rate Chart

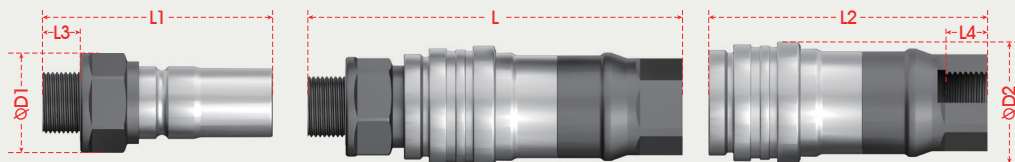


→ TPP05

Plug and socket connection diagram

$$L = L1 + L2 - X$$

$$X = 21\text{mm}$$



	Picture	End Fitting Type	L1	L2	L3	L4	D1	D2	Hex	Product model
Plug		G1/4 Male Thread	45	/	11	/	19	/	17	TPP 05P G14M
		G1/4 Female Thread	49	/	12	/	19	/	17	TPP 05P G14F
Socket		G1/4 Male Thread	/	56.5	/	11	/	22	18	TPP 05S G14M
		G1/4 Female Thread	/	55.5	/	12	/	22	17	TPP 05S G14F

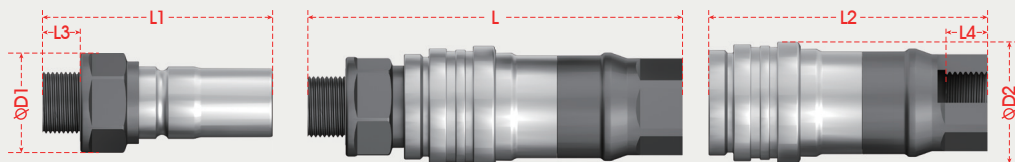
If you need to inquire about other end fitting, please feel free to contact our technical experts.
Our experienced quick connector experts provide you with the most thoughtful service.

→ TPP08

Plug and socket connection diagram

$$L = L1 + L2 - X$$

$$X = 27.8\text{mm}$$



	Picture	End Fitting Type	L1	L2	L3	L4	D1	D2	Hex	Product model
Plug		G3/8 Male Thread	53.5	/	12	/	23.5	/	21	TPP 08P G38M
		G3/8 Female Thread	57.5	/	13	/	23.5	/	21	TPP 08P G38F
Socket		G3/8 Male Thread	/	60.5	/	12	/	30	24	TPP 08S G38M
		G3/8 Female Thread	/	64.5	/	13	/	30	24	TPP 08S G38F

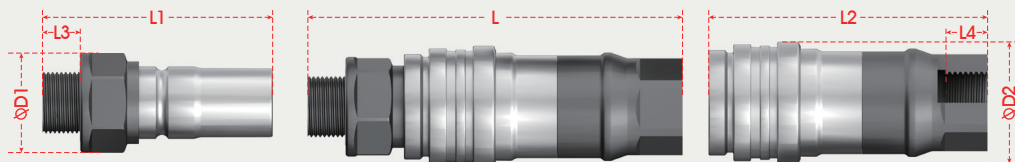
If you need to inquire about other end fitting, please feel free to contact our technical experts.
Our experienced quick connector experts provide you with the most thoughtful service.

→ TPP10

Plug and socket connection diagram

$$L = L1 + L2 - X$$

$$X = 38.5\text{mm}$$



	Picture	End Fitting Type	L1	L2	L3	L4	D1	D2	Hex	Product model
Plug		G1/2 Male Thread	71	/	14	/	30	/	27	TPP 10P G12M
		G1/2 Female Thread	76	/	15	/	30	/	27	TPP 10P G12F
Socket		G1/2 Male Thread	/	76	/	14	/	37.5	30	TPP 10S G12M
		G1/2 Female Thread	/	81	/	15	/	37.5	30	TPP 10S G12F

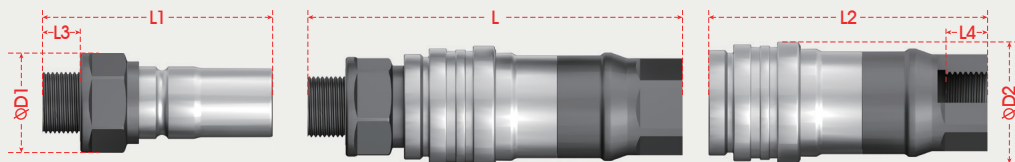
If you need to inquire about other end fitting, please feel free to contact our technical experts.
Our experienced quick connector experts provide you with the most thoughtful service.

→ TPP12

Plug and socket connection diagram

$$L = L1 + L2 - X$$

$$X = 45.8\text{mm}$$



	Picture	End Fitting Type	L1	L2	L3	L4	D1	D2	Hex	Product model
Plug		G1/2 Male Thread	80	/	14	/	34	/	30	TPP 12P G12M
		G1/2 Female Thread	85	/	15	/	34	/	30	TPP 12P G12F
Socket		G1/2 Male Thread	/	95	/	14	/	41.6	30	TPP 12S G12M
		G1/2 Female Thread	/	100	/	15	/	41.6	30	TPP 12S G12F

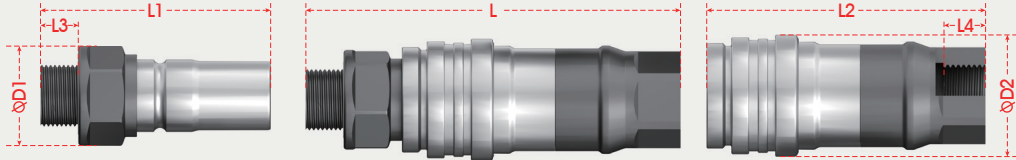
If you need to inquire about other end fitting, please feel free to contact our technical experts.
Our experienced quick connector experts provide you with the most thoughtful service.

→ TPP16

Plug and socket connection diagram

$$L = L1 + L2 - X$$

$$X = 52.9\text{mm}$$



	Picture	End Fitting Type	L1	L2	L3	L4	D1	D2	Hex	Product model
Plug		G3/4 Male Thread	93.5	/	16	/	39	/	36	TPP 16P G34M
		G3/4 Female Thread	97.5	/	17	/	39	/	36	TPP 16P G34F
Socket		G3/4 Male Thread	/	107	/	16	/	50	41	TPP 16S G34M
		G3/4 Female Thread	/	119	/	17	/	50	41	TPP 16S G34F

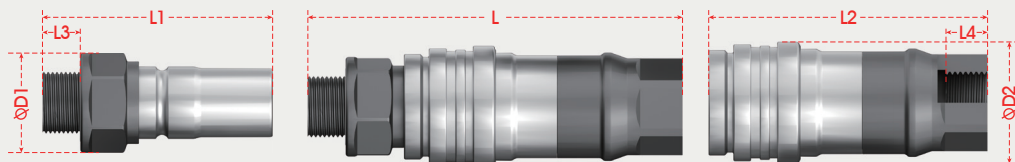
If you need to inquire about other end fitting, please feel free to contact our technical experts.
Our experienced quick connector experts provide you with the most thoughtful service.

→ TPP20

Plug and socket connection diagram

$$L = L1 + L2 - X$$

$$X = 55.4\text{mm}$$



	Picture	End Fitting Type	L1	L2	L3	L4	D1	D2	Hex	Product model
Plug		G1 Male Thread	112.5	/	20	/	50.5	/	46	TPP 20P G01M
		G1 Female Thread	118	/	21	/	50.5	/	46	TPP 20P G01F
Socket		G1 Male Thread	/	125.5	/	20	/	59.5	50	TPP 20S G01M
		G1 Female Thread	/	141	/	21	/	59.5	50	TPP 20S G01F

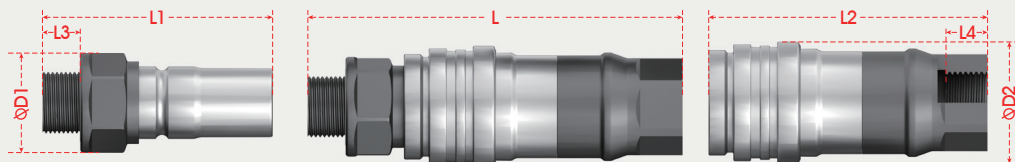
If you need to inquire about other end fitting, please feel free to contact our technical experts.
Our experienced quick connector experts provide you with the most thoughtful service.

→ TPP25

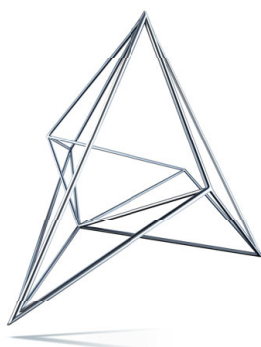
Plug and socket connection diagram

$$L = L1 + L2 - X$$

$$X = 73\text{mm}$$



	Picture	End Fitting Type	L1	L2	L3	L4	D1	D2	Hex	Product model
Plug		G1/4 Male Thread	123	/	21	/	60	/	55	TPP 25P G54M
		G1/4 Female Thread	129	/	22	/	61	/	55	TPP 25P G54F
Socket		G1/4 Female Thread	/	157	/	22	/	69	55	TPP 25S G54F



Symmetron

МОСКВА
Ленинградское ш., д. 69, к. 1
Тел.: +7 495 961-20-20
moscow@symmetron.ru

САНКТ-ПЕТЕРБУРГ
ул. Таллинская, д. 7
Тел.: +7 812 449-40-00
spb@symmetron.ru

НОВОСИБИРСК
ул. Блюхера, д. 716
Тел.: +7 383 361-34-24
sibir@symmetron.ru

www.symmetron.ru