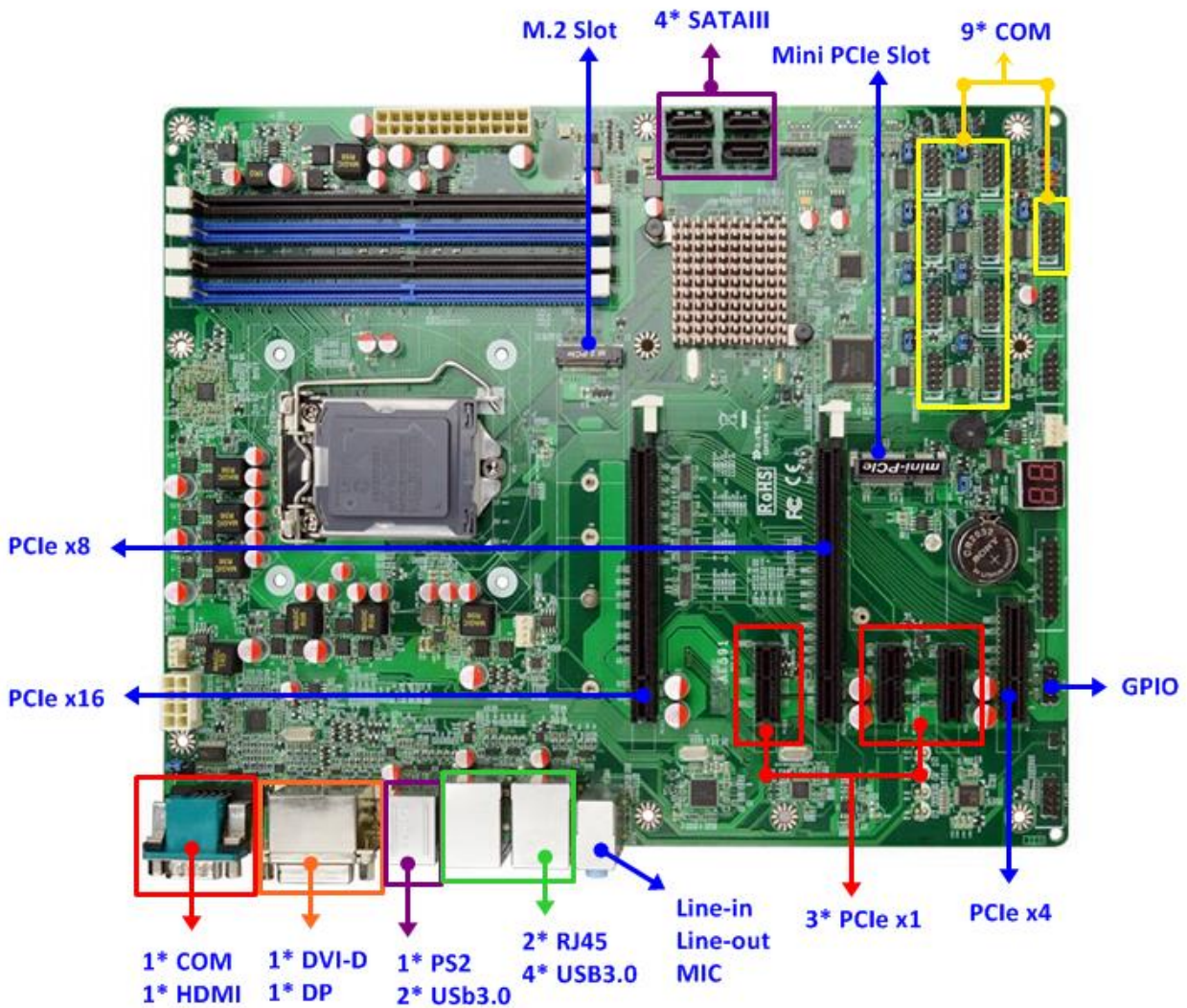


1. Intel® Q170 Express Chipset
2. Supports Intel LGA 1151 Socket Core™ i3, i5, i7 & Pentium Processors (Max. 65W TDP)
3. Support 4 * 288 pin 2133MHz Dual CH DDR4 SDRAM U-DIMM Max. up to 64GB
4. Intel i219LM & i210AT Gigabit LAN
5. Support Intel Active Management Technology (iAMT 11.0)
6. Support TPM 2.0 function
7. Support CPU Smart FAN
8. Supports ACPI S3 Function
9. Support Watch dog Technology
10. ATX form factor (305mm * 244mm)



Product Specifications	
Form Factor	
Dimensions	- ATX form factor (305mm * 244mm)
Processor System	
CPU	- Intel LGA 1151 Socket Core™ i3, i5, i7 & Pentium Processors
Core Number	- (by CPU)
Max Speed	- (by CPU)
L2 Cache	- (by CPU)
Chipset	- Intel® Q170 Express chipset
BIOS	- AMI 128Mb SMT Flash ROM
Expansion Slot	
Mini-PCIe	- 1 (full size)
PCIe	- 6 [1 x16, 1 x8, 3 x1] Note: When PCIe x8 slot is used, PCIe x16 auto switch to PCIe x8 bandwidth.
M.2	- 1 [PCIe x4 M-key, 2242/2260/2280/22110 shared with SATA1(ME FW option)]
Memory	
Technology	- 4 * DDR4 2133MHz Dual CH
Max.	- 64GB
Socket	- 4 * U-DIMM
Graphics	
Controller	- Intel® Gen9 Graphics supports DX 11/12, OGL4.3/4.4
VRAM	- Shared Memory
HDMI 2.0	- 1 (Max. resolution 4096*2160@60Hz)
DVI-D	- 1 (Max. resolution 1920*1080@60Hz)
DisplayPort 1.2	- 1 (Max. resolution 4096*2304@60Hz)
MultiDisplay	- Yes (Triple Display)
Ethernet	
Ethernet	- 10/100/1000 Mbps
Controller	- GbE LAN: Intel i219LM & i210AT
Connector	- 2 * RJ 45
SATA	
Max Data Transfer Rate	- 4 * SATAIII (6.0Gb/s)
Rear I/O	
DVI-D	- 1
HDMI	- 1
DisplayPort	- 1
Ethernet	- 2

USB	- 6 (6 * USB 3.0)
Audio	- 1 (Line-in / MIC / Line-out)
Serial	- 1 (RS232/422/485 with 5V/12V selectable header)
PS2	- 1
Internal Connector	
USB	- 4 (4 * USB 2.0)
Serial	- 9 (COM2 RS232/422/485, COM3~10 RS232 with 5V/12V selectable header)
SATA	- 4 * SATAIII (6.0Gb/s)
mPCIe	- 1 (full size)
M.2	- 1 [PCIe x4 M-key, 2242/2260/2280/22110 shared with SATA1(ME FW option)]
TPM Header	- 1
GPIO 8-bit	- 4in / 4 out
Chassis intrusion	- 1
Audio Header	- 1
Watchdog Timer	
Output	- From Super I/O to drag RESETCON#
Interval	- 256 segments, 0,1,2...255sec/min
Power Requirements	
Input PWR	- 24-pin/8-pin ATX PWR Con
Power On	AT/ATX Supported - ATX: Press Button to PWR on after Power input ready
Certifications	
Certifications	- CE, FCC, RoHS, REACH
Environment	
Temperature	- Operating: 0°C – 60°C
	- Storage: -20°C – 85°C

- For further information please visit the website at <http://www.jetwayipc.com>
- The Specification may be changed without further notice.

Standard Accessories			
Parts	2* CABLE for SATA3 50cm	3* COM cable	I/O Shield
P/N	G01-SATA3-BL-1F	G01-COM9X3-30A-2F	F04-MB-042-F