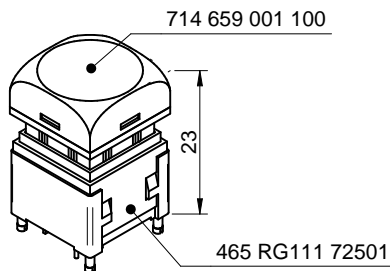
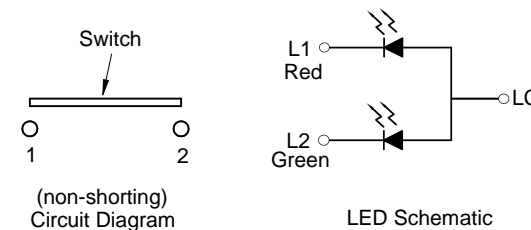
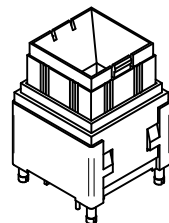
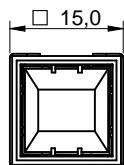
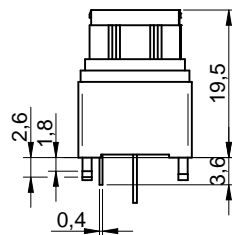
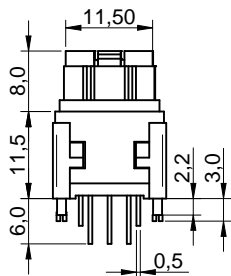


P.C.B Layout



Scale - 1:1

TECHNICAL CHARACTERISTICS

SPECIFICATION

>Rating:	100mA 12VDC
>Contact Resistance :	
Initial :	200mΩ max.
After Life Test :	300mΩ max.
>Insulation Resistance :	min. 100MOHM at 500VDC
>Dielectric Strength :	500VAC for 1 minute
>Pre-Travel: 2.7 ±0.3mm	
>Total-Travel: 4.5 ±0.3mm	
>Bounce:10ms max	

MATERIAL

>Actuator:	POM UL HB
>Actuator Fixture :	PA66 UL HB, color Black
>Frame :	PA66 UL HB, color Black
>Stationary Board:	PA66 UL HB
>Stationary Contact :	Brass with Gold
>Moving Contact :	Bronze with Gold
>Spring:	Carbon Steel
>PCB :	FR4 Epoxy Resin
>Switch Terminal :	Brass with Tin
>LED Terminal :	Copper plated steel with Tin

SOLDERING INFORMATION

>Terminal in THT version
> Wave soldering 260°C 10sec. max
>Hand soldering under 350°C for 3sec. max

ENVIRONMENTAL

Storage condition :	-40°C ~ +85°C ,60% RH max.
Operation condition :	-40°C ~ +85°C
Compliance :	ROHS, Reach

HANDLING ADVISE

>ESD prevention methods need to be applied for manual handling and processing by machinery
>Resistors for protection are obligator

PACKAGING INFORMATION

>ESD Tray

Part number	Force	Color of LED	Function	Schematic	Life Cycle
465 RG111 72501	200g ± 80g	Red/Green	Momentary	SPST	1.000.000

This electronic component is designed and developed with the intention for use in general electronics equipments.

Before incorporating the components into any equipments in the field such as aerospace, aviation, nuclear control, submarine, transportation, (automotive control, train control, ship control), transportation signal, disaster prevention, medical, public information network etc. where higher safety and reliability are especially required or if there is possibility of direct damage or injury to human body, Würth Elektronik must be asked for a written approval.

In addition, even electronic component in general electronic equipments, when used in electrical circuits that require high safety, reliability functions or performance, the sufficient reliability evaluation-check for the safety must be performed before by the user before usage.

Projection				GENERAL TOLERANCE DIN ISO 2768 T1m			Basic material			
					Date	Name	DESCRIPTION			
				Drawn	13-10-01	Fandrey	SwPBT			
				Checked	13-10-01	Hsu	WS-PBTL 15x15mm Push Button Switch with integrated LED, THT version			
							Scale	1:1	Position	SIZE
a	(non-shorting)	15-01-20	DaF					Drawing.- No.	465 RG 111 72501	A4
REV	FILE	DATE	BY					System: Solid Edge ST6		

