

Company Profile

# TechStar

2013/02/28

2013/3/27



# TechStar Basic

- Established in 2002
- 2.2 millions Usd turnover in 2012
- 12-16 Employees averagely
- R/D and Marketing Oriented Company
- OEM/ODM Service

# Techstar Location

TechStar

Taipei Office

- Logistics
- Supporting
- Packing/Shipping

Yilan office

- R/D
- Sales/Marketing
- Management
- QA/Inspection







# Techstar Product Coverage

- LCD Controller board
- A/D Board with HDMI/AV/PC Input
- IPC Display Solution
- Custom Board Design Service
- TFT LED driver
- Custom Cable assembly Service
- TFT Total Solution Board



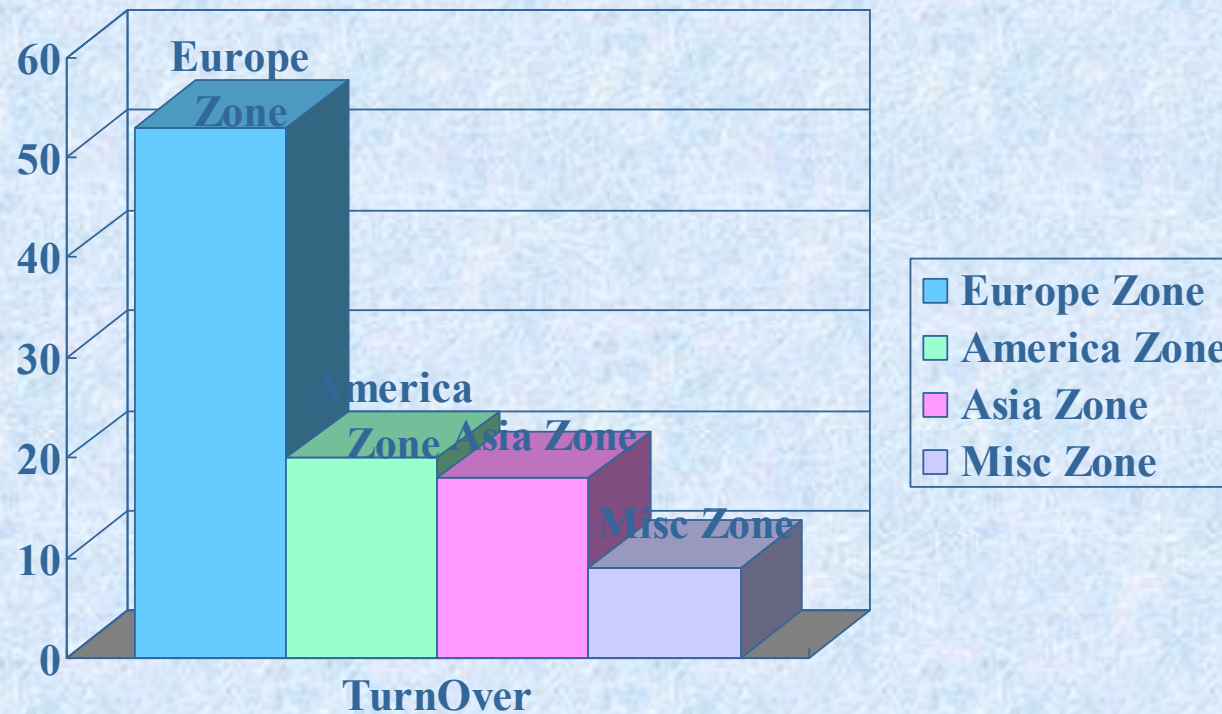
# Why Techstar ?

- **Emphasize Development, trends, new products and techniques**
- **Design-in and application support**
- **Excellent price-performance ratio**
- **Custom design Capability to meet custom requirement**
- **Flexible action and quick Solution Delivery**



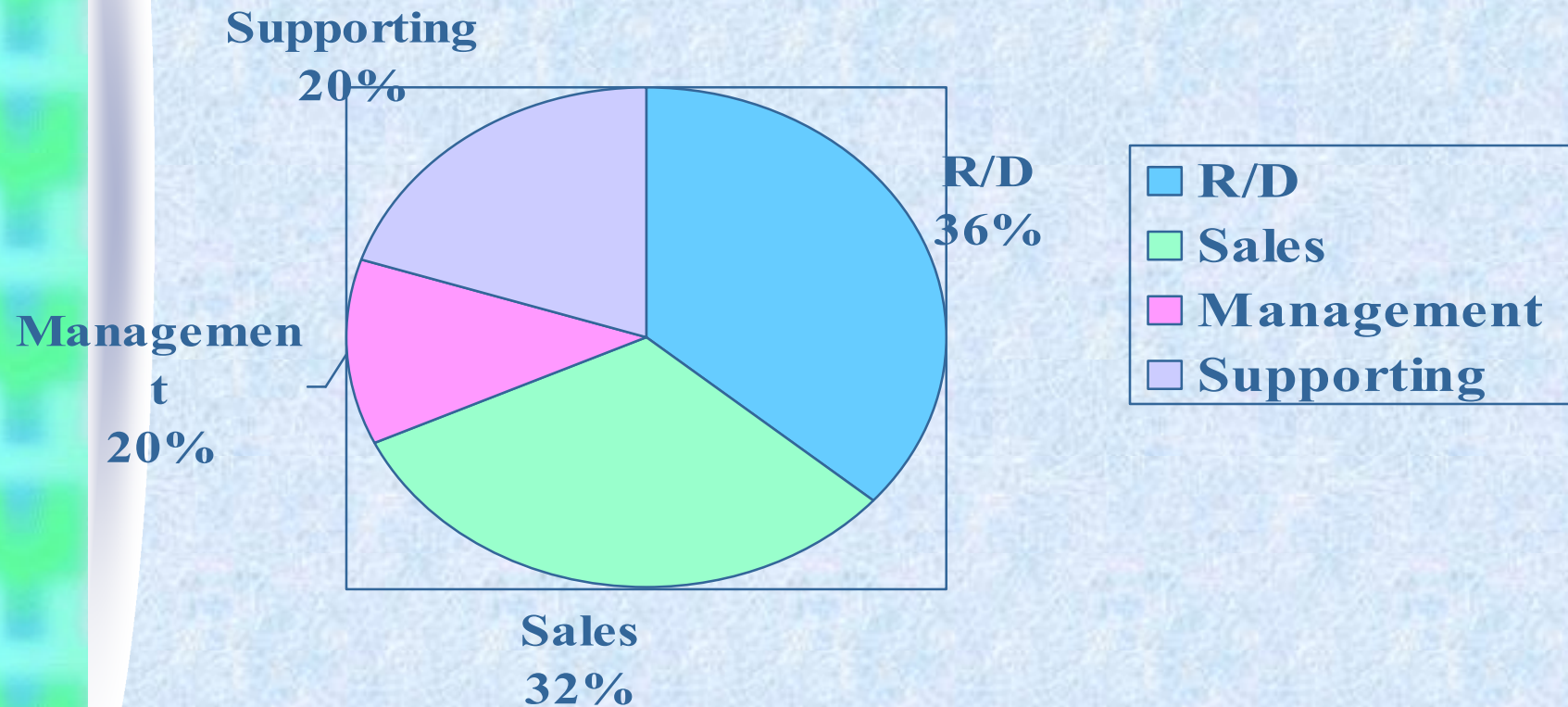
# Our Marketing Structure/Distribution

- Mainly focus on Europe & N.America Zone Marketing



# Our Department Budget & Investment Share

- Emphasize and focus on R/D development
- Customer Service and FAE supporting







## Our Manufacturing & Subcontract Factory



- 3 SMT line /Fuji XTII/Hitachi GXS-15
- Assembly and manufactured in Taiwan



- Qualified and well-trained Assembly Line

2013/3/27





# Our Strategy with Customer

- Technically and design-in oriented policy
- Strong support of development and application projects
- Long-term partnership with Customer  
Maintain a skilled and well-trained staff
- Integrity/Commitment/Trust



# Our Goal

- Win-Win Strategy with Customer
- Quality & Customer's Satisfactory
- Growing along with Customer
- Unceasing Innovation

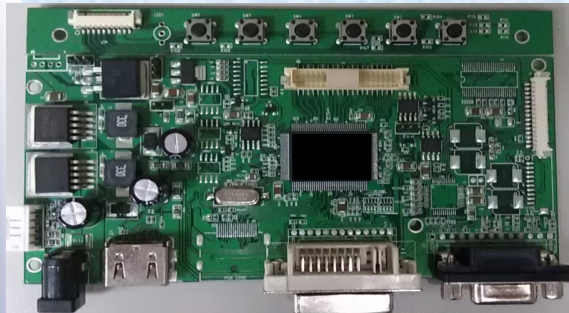




# Our Product and Service

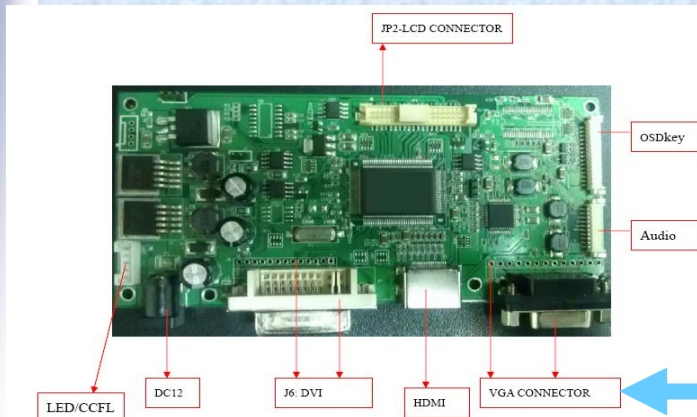
- LCD Controller (A/D) Board
- Cable Assembly Design Service
- OEM/ODM Board Design Service

# Standard Digital LCD Board (1/3)



THV 361 / THD328

- Support HDMI/DVI/VGA
- TTL/Single/Dual LVDS
- RS232 Command Optional
- Support TFT From 640X40 To 1920x1080



THD328



# Standard Digital LCD Board (2/3)

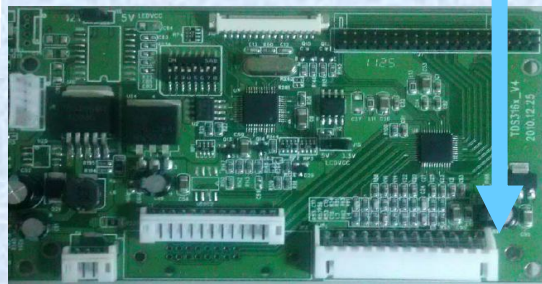


TDS3160/TDS3280

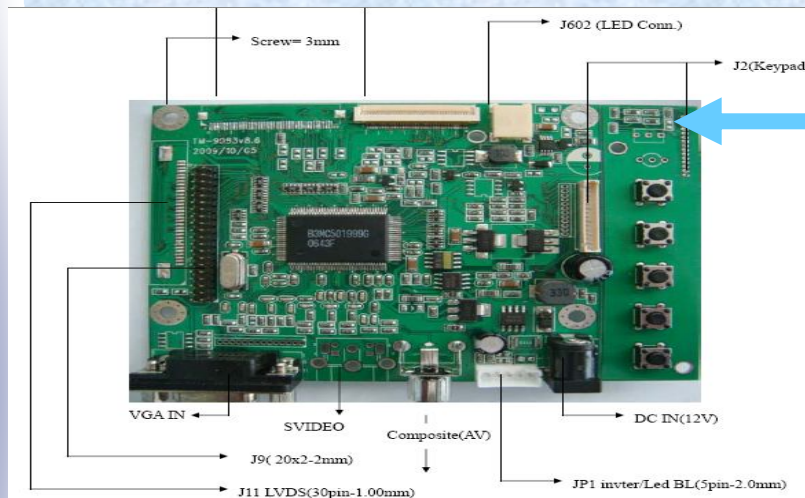
- Support DVI/VGA

- Low Profile Support

- TFT from 640x480 to 1920x1080

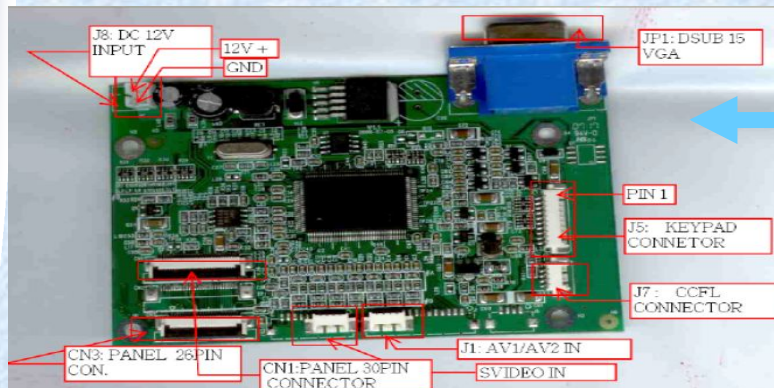


# Standard Digital LCD (3/3)



## TMS Board

- Support VGA/VIDEO Input
- Compact Size
- TTL/LVDS



## TAS Board

- Support VGA/Video Input
- Support Analog Panel type



# Adaptor/ Convert Board (1/2)

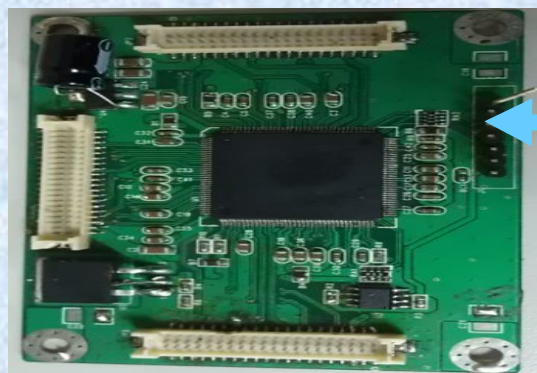


← Support 3.5" to 12" TFT



← SLVD Board

- LVDS 18 bit to 24bit conversion
- Single to Dual channel LVDS conversion

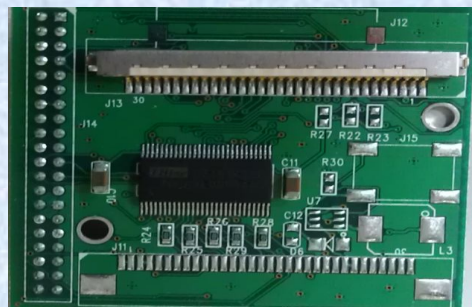


← LVSP Board

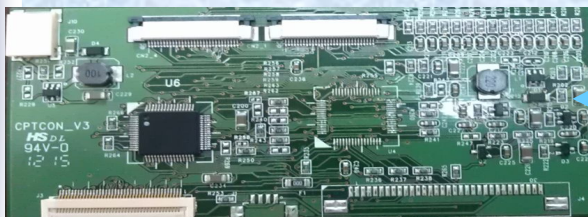
- LVDS Splitter
- One LVDS-IN ,Two LVDS OUT



# Adaptor/ Convert Board (2/2)



TTL /LVDS Converter Board



CMI/AUO/Innolux TCON Board







# Custom Board Design

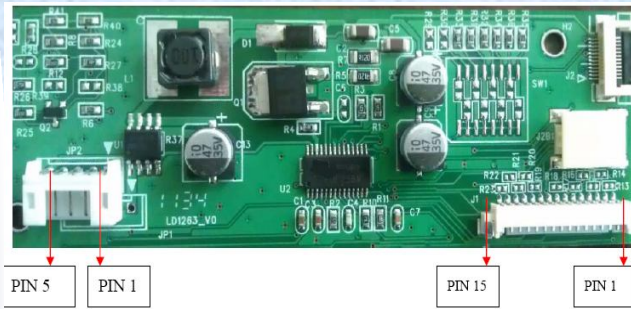


← Pump Controller Board



← LCD Adaptor board

# LED Driver Board



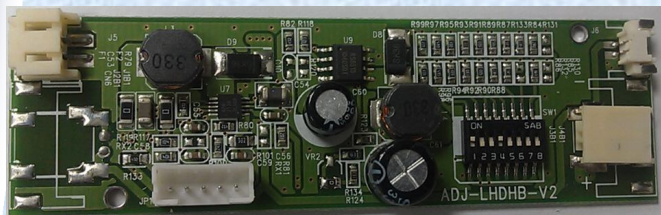
**LD1263**

- Support 4 to 8 lightbar Led



**LD1252**

- Support Adjustable LED driver



**LED800**

- Support Small TFT Lightbar



# Standard/Custom Cable Assembly(1/4)

**0.4PITCH**



For I-PEX20474-30Pin



For I-PEX20345 - 30、40Pin



品名：HIROSE DF9

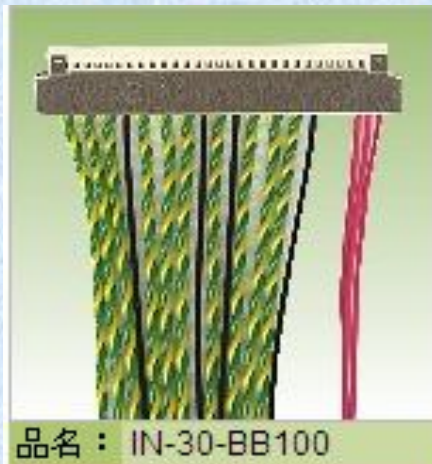


品名：HIROSE DF9

請點選觀看放大圖



品名：IN-30-BB100



品名：IN-30-BB100



品名：JAE FIE

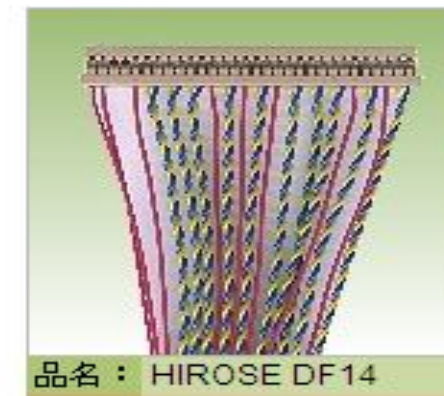


品名：JAE FI-WxxS

2013/3/27

19

# Standard/Custom Cable Assembly(2/4)



2013/3/27



# Standard/Custom Cable Assembly(3/4)



品名：HIROSE DF 14



品名：HIROSE DF 19



品名：HIROSE DF 19



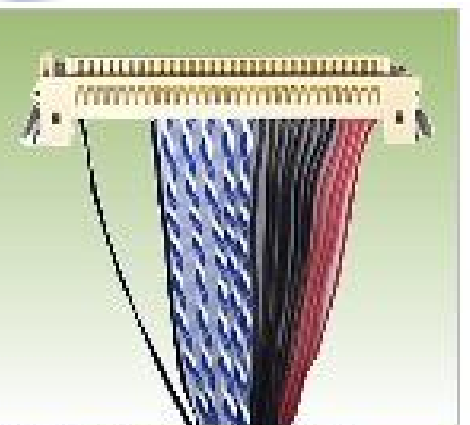
品名：JAE FI-WxxS



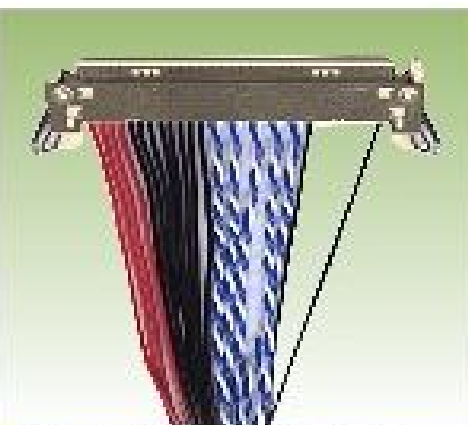
品名：JAE FIX



品名：JAE FIX



品名：JAE FIX-LOCK



品名：JAE FIX-LOCK



品名：JST PH

2013/3/27

# Standard/Custom Cable Assembly(4/4)



品名：JST PH



品名：JST PHDR



品名：JST PHDR



品名：JST SSH



品名：JST SSH



品名：JST XH



品名：JST XH



品名：MOLEX 51146



品名：MOLEX 51146

2013/3/27





## Under Planning for development

- 4K X 2K Display Solution Board
- Support EDP Output Interface Display Board
- Support MIPI Output Interface Display Board



**THANK YOU**